



GAT MONTHLY MEMBERSHIP PROGRESS REPORT

Results as of: 1/31/2022

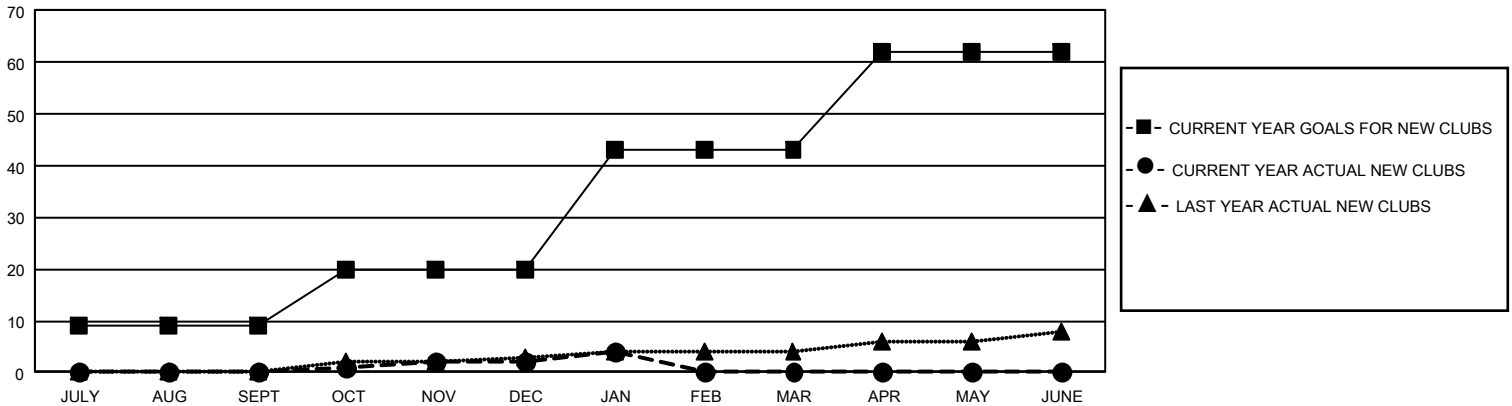
GAT Constitutional Area 5 - Japan

REPORT DOES NOT INCLUDE CLUBS IN UNDISTRICTED AREAS.

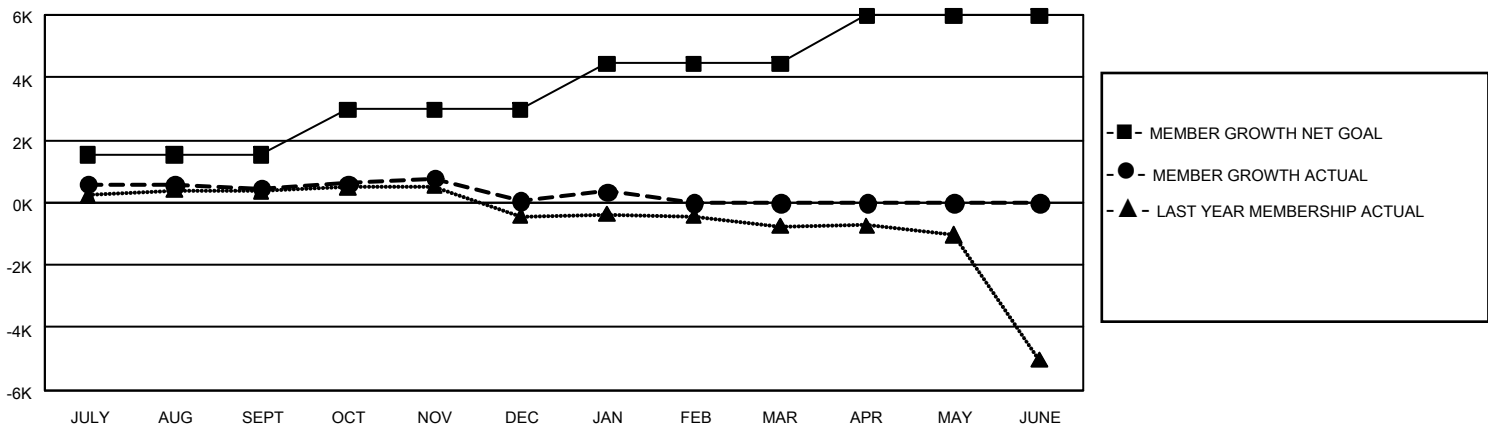
Clubs			
RESULTS FOR 2021-2022			
QUARTER	NEW CLUB GOAL	NEW CLUBS	DROPPED CLUBS
JULY/AUG/SEPT	27	0	5
OCT/NOV/DEC	33	2	10
JAN/FEB/MAR	69	2	3
APR/MAY/JUNE	57	0	0

Members			
RESULTS FOR 2021-2022			
QUARTER	MEMBER GROWTH NET GOAL	MEMBER GROWTH ACTUAL	DROPPED MEMBERS ACTUAL (including transfers)
JULY/AUG/SEPT	1540	1,942	1,350
OCT/NOV/DEC	1435	1,429	1,776
JAN/FEB/MAR	1461	740	424
APR/MAY/JUNE	1540	0	0

GOALS AND ACTUAL NEW CLUBS CUMULATIVE



GOALS AND ACTUAL MEMBERS CUMULATIVE



DROPPED CLUBS: 18	1,487 CLUBS OF 2,854 ADDED 1 OR MORE NEW MEMBERS	GENDER DISTRIBUTION
DROPPED MEMBERS	CLICK HERE FOR CUMULATIVE MEMBERSHIP DATA	MALE 77,929 (76.51%)
DECEASED 501		FEMALE 23,924 (23.49%)
CLUB CANCELLED 45		NON BINARY 0 (0.00%)
OTHER 3,004		PREFER NOT TO ANSWER 2 (0.00%)
TOTAL 3,550		TOTAL FAMILY UNIT MEMBERS 35,407
		FAMILY MEMBERS PAYING HALF DUES 19,598